

cardfive

Applications:

- Visitor badges
- Access control
- Loyalty programs
- Membership IDs
- Driver licenses
- Clubs and associations
- Retails stores
- Prisons facilities
- Schools and libraries
- Sports

...whenever identification is necessary



cardfive vision

professional card design software

Easy and flexible features to manage all card design, printing needs, and encoding solutions

design your world in a card



Total environment integration

Design, manage database and printing jobs in the same integrated window with total versatility.

Powerful imaging and design features

CardFive makes it easy to design great looking cards with its capacity to integrate any image type and powerful design tools such as transparency, cut-out-color, rounded corners and much more.

Database connections

From CSV to ODBC CardFive editions offer the optimal solution for every database need.

Multi professional resources

Encode magnetic stripe, contactless cards, manage biometric devices to print or encode data from fingerprints, connect to any smartcard application to encode at print time, manage overlays, barcodes, variable objects and much more with the simplicity of a complete user friendly solution.

Printing speed and maximum error control

In addition to Windows drivers CardFive includes more than 100 internal drivers for the most popular card printers on the market optimising printing speed and error control.

Fast upgrades and easy stock management

With RLL technology (Remote License Loader) developed by Nfive upgrades can be delivered immediately by email with no delays and no extra costs.

Robustness

You will be working with an application that has a very robust structure developed by NFive and continuously improved along more than 11 years.

Simplicity

NFive works hard to find the easiest and most productive way of doing things and this results in applications very simple to learn and operate that often move the market in new directions.

Reliability

CardFive's frequent updates and new releases accompanying new trends and technology developments guarantee that your software will never be out dated.



For more information contact our sales department

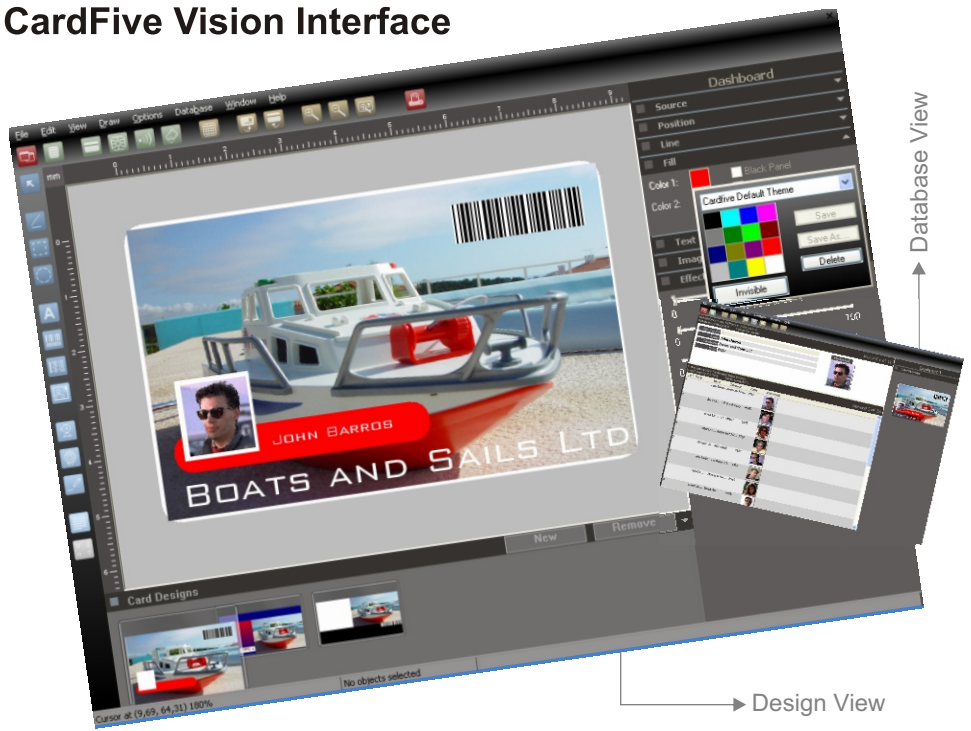
NFive – Portugal (Head Quarters)
 Phone: +351 261 860 455
 Fax: +351 261 865 647
 Email: sales@nfive.com

NFive – USA
 Phone: +1 805 522 9907
 Fax: +1 805 577 9672
 Email: sales.usa@nfive.com

NFive – Italy
 Phone: +39 051 617 8229
 Fax: +39 051 618 3541
 Email: sales.it@nfive.com

NFive – Singapore
 Phone: +65 9736 9887
 Email: mtan@nfive.com

CardFive Vision Interface



CardFive Vision Editions

Upgrades available by email (using RLL technology)

	Classic	Lite XL	Premier	Professional
Full Color Design Capabilities	■	■	■	■
Double Sided Cards	■	■	■	■
Image Acquisition (VFW, TWAIN, WIA, DS, FILE)	■	■	■	■
Printing Variables (Date Time, Counters)	■	■	■	■
Printing Variables (Concatenation, Keyboard input)	■	■	■	■
Multi Layout Card Designs	■	■	■	■
Clipart Manager	■	■	■	■
Signature Panel			■	■
Biometric Management			■	■
Magnetic Encoding (ISO, JIS)		■	■	■
Contact SmartCard Plug Ins			■	■
Contactless Cards (Mifare, HID, EM Prox, TI)			■	■
Barcodes 1D - Code39, 128	■	■	■	■
Barcodes 1D - All	■	■	■	■
Barcodes 2D		■	■	■
CSV DB Import For Printing Only		■	■	■
ODBC Connectivity MS Access		■	■	■
Database Editing View		■	■	■
ODBC Connectivity - All Databases		■	■	■
Conditional Layout Printing Form DB		■	■	■
DataBase Reports		■	■	■
Auto Print		■	■	■
NetWork Print		■	■	■
Network Print Server		■	■	■
Logins				■

Optional plug-in

Available to all cardfive editions



Face Snap

For professional photo badge production.

Automatically identifies faces within a scenario, cropping them with 10% of surrounding area, and optimizing all images for total consistency of the production work.

No need to work with an external application